

MST-64P EV

SUPERFAST Electronic Coffee Grinder

HOPPER

1,3Kg

FLAT BURRS

Ø 64mm

**CONTINUOUS
MICROMETRIC
GRINDING
ADJUSTMENT**

PUSH BUTTON

And **NEW ADJUSTABLE
FILTER SUPPORT** : free
hands to prepare the cup
while the machine grinds
and no more waste of coffee

SINGLE DOSE

Less than 2 seconds

DOUBLE DOSE

Less than 4 seconds



MST-64P EV

SUPERFAST Electronic Coffee Grinder

MULTILINGUAL DISPLAY
with CAPACITIVE KEYS in
7 DIFFERENT COLORS



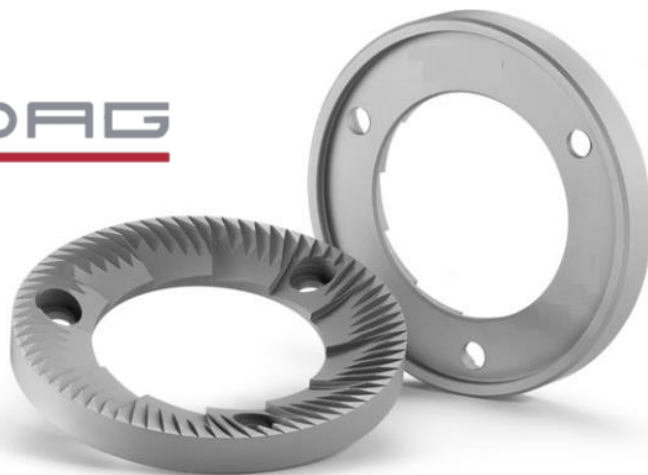
NEW EASY-CLEANING
REMOVABLE OUTPUT



Strong and compact *SUPERFAST* Electronic Coffee Grinder on-demand with 64mm flat burrs. Its aluminum and steel body and the powerful 400 Watt engine make it a reliable and indestructible work companion. The on-demand system of MST-64P EV, grinds only the coffee dose required, in order to preserve unchanged all the organoleptic qualities contained in a roasted coffee bean. Thanks to the continuous micrometric adjustment system, MST-64P EV ensures unmatched homogeneity of the grind.

MST-64P EV

SUPERFAST Electronic Coffee Grinder



- Single dose supply in less 2 seconds
- Easy and intuitive multilingual digital display
- LED backlit capacitive controls with 7 different colors
- Single/double dose dispensing also by push-button
- Capacità contenitore caffè in grani: 1,3 Kg o 600g
- Optional RedSpeed Burrs: more than 6 times longer life than with standard burrs
- Available in 5 colors: metallic gray, white, black, red and mirror

Dimensions	20x27x51 (H) cm – 13 Kg
Power	400 Watt. - 220-240v / 50-60Hz.
RPM	1400/min(50 Hz) 1600/min(60 Hz)
Grinding Regulation	Stepless micrometric grinding adjustment
Doses Adjustment	± 0,05 sec
Blades Type	Flat Ø 64 mm
Hopper capacity:	1,3 Kg
Packaging	25x40x60 (H) cm - 14 Kg